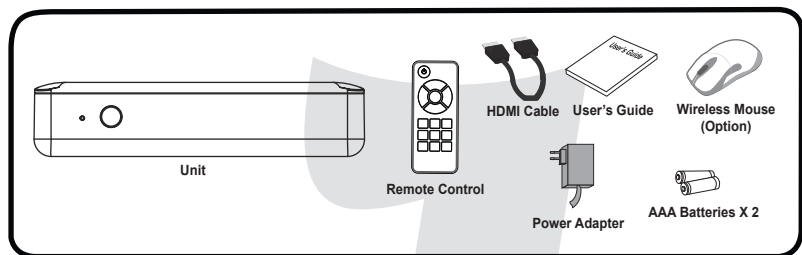
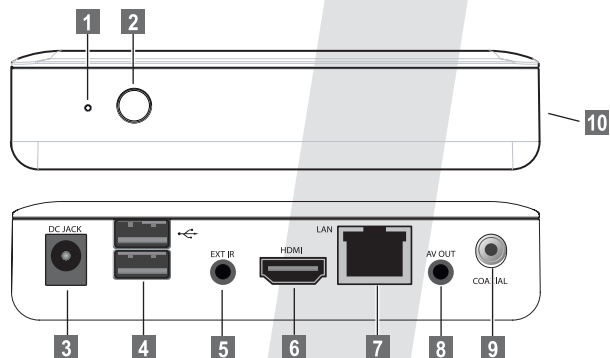


### What's in the box



### Connection & Name



- 1 Power LED**
- 2 IR receiving part**  
To Receive IR signal from remote control.
- 3 DC IN (12V)**  
To Connect Power Adapter cable
- 4 USB HOST**  
Digital input jack for USB Storage (USB external HDD or USB memory). It can be used for wireless option.
- 5 External IR**  
To Connect external IR receiver
- 6 HDMI OUT**  
To Connect to HDMI input of TV
- 7 LAN**  
To Connect LAN cable
- 8 AV OUT**  
To Connect AV cable
- 9 COAXIAL**  
To Connect Coaxial input of Digital Amplifier
- 10 SD Card Slot**  
To Connect SD Memory Card

CE This product is in conformity with the EMC directive and low-voltage directive.

### Input Device

#### 1 Mouse - Wireless (Option)

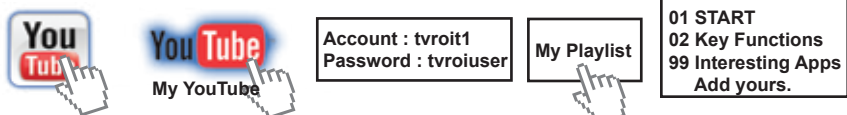
1. Connect wireless USB in the battery compartment of the mouse to an USB input of this unit. Turn on the mouse by on/off button at the bottom.

2. Mouse Buttons
  - 1 Left Button**
    - Click : You can activate the action where cursor is located.
    - Long Click : You can grab the apps for move or delete. You can select and activate further actions such as copy, paste, move, delete, download and select input methods.
  - 2 Scroll Button**
    - Click : It works as RETURN that you can go back to the previous screen or exit from where you are.
    - Scroll up : You can move up to the list or to the page.
    - Scroll down : You can move down to the list or to the page.
  - 3 Right button**
    - You can enter the setting menu of the current application for adjusting value of each application.

#### 2 Remote Control

- 
- TV SYSTEM** TV Resolution Toggle
  - Source** Selection for media file device
  - Home** Home - Going to Home
  - MENU** Going to each Application Menu
  - Backspace** Backspace
  - Search** Search
  - Return** Return - Going Back after setting
  - Stand-by / Power On** Stand-by / Power On
  - Repeat Playback** Repeat Playback
  - Zoom In / Zoom Out** Zoom In / Zoom Out
  - Skip Backward / Skip Forward** Skip Backward / Skip Forward Page Up / Page Down in Web page
  - Audio Mute** Audio Mute
  - Movie / Music / Photo** Going to Movie, Music, Photo Application
  - Fast Backward / Fast Forward** Fast Backward / Fast Forward
  - Previous / Next** Previous / Next
  - Function RED** Display File Info during Playback
  - Function GREEN** Select AUDIO during Playback
  - Function YELLOW** Subtitle Selection by Pressing Subtitle Setting by Long Pressing
  - Function BLUE** Period(.)

**VIDEO GUIDE** You can find Video Guide with the following steps in T1 when it is connected to Internet.

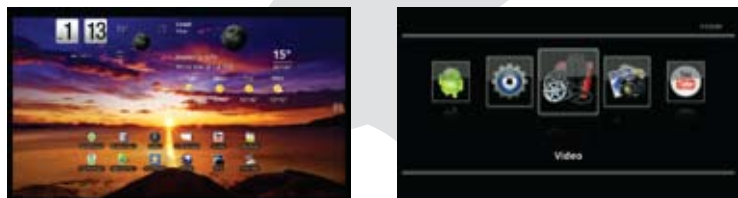


- \* You can watch all in [www.tvroi.net](http://www.tvroi.net) which is multi-language forum and product information page. This manual is showing only very basic applications due to the functions are often updated and changed by application updates through TVroi Market. Therefore, we are updating Video guide in order to show the right explanation. Video Guide is best way to find how to use this unit.
- \* Please post your opinion also to [www.facebook.com/ellion.tvroi](http://www.facebook.com/ellion.tvroi) for share your experience with other users.

### Selection of Graphic User Interface (GUI)

You can select User interface between Android GUI (A-GUI) and Media Player GUI (M-GUI) in this unit. Please select Android GUI (A-GUI) if you are familiar with Android system and you want to enjoy unique functions such as background change, Application location change, setting the widget and shortcut on you home so that you can have your own unique home. It needs more usage of mouse.

Please select Media Player GUI (M-GUI) if you are not familiar with Android system. It is more like set top box or media player so that you can enjoy it more simply and easily.



1 Press Home button and you can see the below selection of your home.



- 2 Select LauncherPro for A-GUI or TVroiLauncher for M-GUI. Click the box on "Use by default for this action" and select the GUI you want. You will go the selected GUI after it.
- 3 Go to Settings -> Applications -> Manage Applications -> Selected Launcher -> Select "Clear Default" for clear the default GUI. You can have 2 launchers again for selection when you press HOME.

\* All trademarks or names or logos shown on this manual are registered trademarks of their respective holders. They are shown only for explanation of their functions.

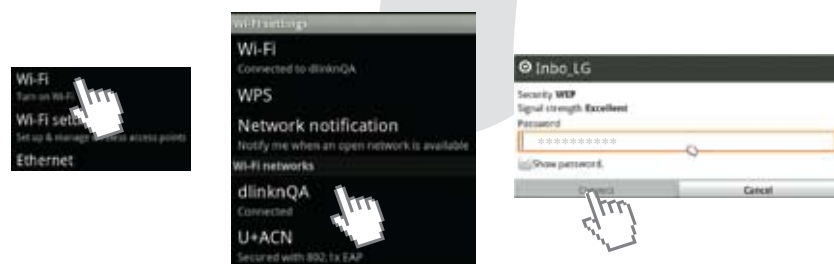
### Basic Setting

- 1 Language and Keyboard Setting
  - Search
  - Language & keyboard
  - Date & time
  - Samba
  - Select language
  - Latin Input
  - User dictionary
- 2 Display Setting
  - Sound
  - Display
  - Application
  - Privacy
  - Hue
  - Over scan adjust
  - Resolution
  - Over scan adjust
- 3 Time Setting
  - Search
  - Language & keyboard
  - Date & time
  - Samba
  - Automatic
  - Set date
  - Select time zone
  - Set time
  - Taipei
  - Irkutsk
  - Seoul
  - Tokyo, Osaka
- 4 Network Setting
  - Ethernet (LAN) Setting
    - Configure Ethernet Device
    - Connection Type
    - Dhcp
    - Static IP
    - IP address
    - 192.168.0.178
    - Netmask
    - 255.255.255.0
    - Gateway

\* When you type the IP address, it would be easier to use Remote Control number keys and Blue color function key for dot(.).

#### Wifi (Wireless LAN) Setting

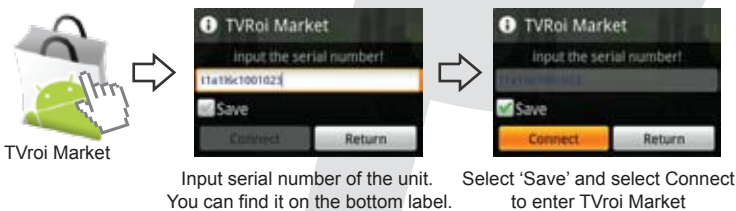
You need optional wireless USB adapter for this connection which is not included in this package.



## APP Installation / Uninstallation

### 1 Installation from Market

This unit has its own market which contains verified APPS. You can download and install them. Please install all the apps in Top 18 page if you enjoy this unit correctly.



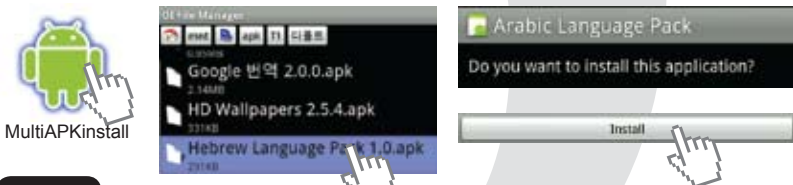
Input serial number of the unit. You can find it on the bottom label. Select 'Save' and select Connect to enter TVroi Market

Press Stop on Remote Control to Exit the TVroi Market

#### NOTE

- \* You may encounter an failure of installation of APPS from Market. Please uninstall it first and try to install it again.
- \* You need to connect USB memory or SD card for Installation file download. Application shall be installed to system memory.
- \* You may need mouse in order to use applications after install them from the market.

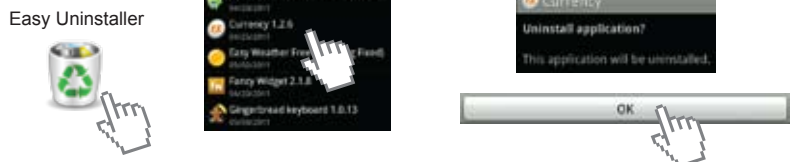
### 2 External APK File



#### NOTE

Most APK files are mainly for Smart Phone so that many of them are not able to be installed or not to be working correctly in this unit. In case that it is found to be, uninstall it from this unit. Some of APK file could contain computer virus. Please install what is verified only.

### 3 Uninstallation



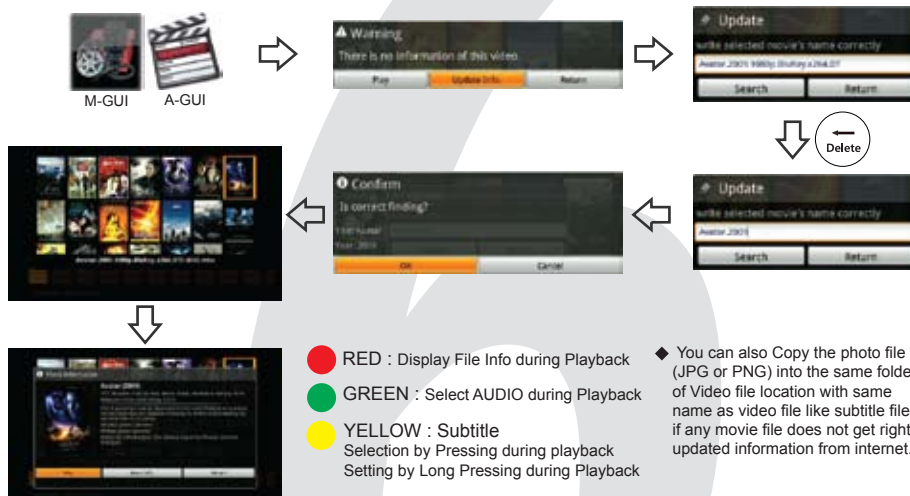
## AV File Playback

### 1 Selecting AV File Source



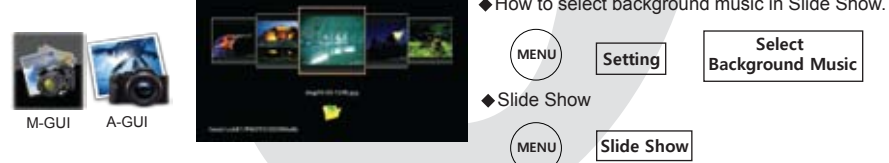
### 2 AV File Playback

#### 1) VIDEO



You can also Copy the photo file (JPG or PNG) into the same folder of Video file location with same name as video file like subtitle file if any movie file does not get right updated information from internet.

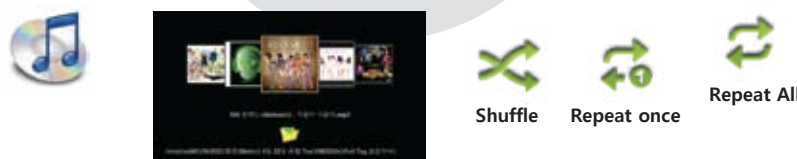
#### 2) Photo



How to select background music in Slide Show.

Slide Show

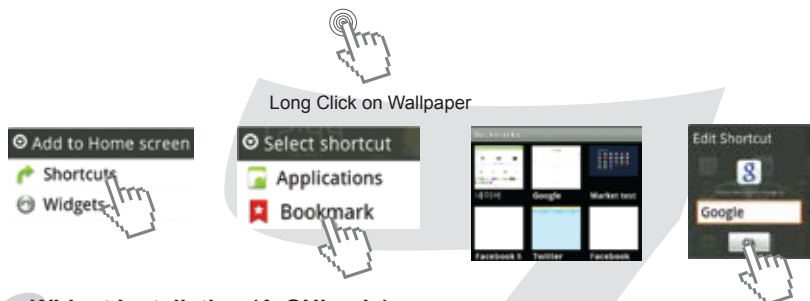
#### 3) Music



The Icon will be shown only for the MP3 file which has album art in its ID3 Tag. Default Icon will be shown only with other files.

## Shortcut (A-GUI only)

You can add the bookmark of your favorite sites or APPS on Home Wallpaper as Shortcuts.



### Widget Installation (A-GUI only)

You can add Widget on Home Wallpaper including Clock, Weather and ATK.



\* After install any widget on your home, please set the right figure according to your conditions in each apps setting menu. You need to unclick any setting relating to GPS because this unit does not have GPS.

### Changing Wallpaper (A-GUI only)

#### 1 From Wallpaper gallery



#### 2 With APPS

You can change Wallpaper with APPS such as Wallpapers HD in TVroi market.

- \* Most of Android APPS do not have EXIT mode so that they may be active in the background after finishing them which may cause the system delay. Please kill the background working APPS by pressing the task killer app (ex. Advance Task Killer) time to time to secure memory space. It help system working in normal condition.
- \* Some of files in above format may not be supported depending on the encoding method. You are kindly requested to make transcoding them with the proper utility program.

## Adding or Deleting APPS on or from Home Wallpaper (A-GUI only)

All installed APPS will be stored at APP Drawer. You can add them on your Home Wallpaper and take them back to APP Drawer.

- Icon for opening App Drawer located at the middle of right end in Home wallpaper.
- Home Icon for going back to Home Wallpaper at the middle of right end in App Drawer.
- Trash Bin Icon that you can drop down for deleting an App from Home Wallpaper. App Drawer Icon shall change to it when you long click on an App.

### 1 Adding APPS on Home Wallpaper



### 2 Deleting APPS from Home Wallpaper



### F/W Upgrade \* You can download the F/W from [www.tvroi.net](http://www.tvroi.net)

- 1 Uninstall all the applications by Easy Uninstaller before F/W upgrade in order to prevent any conflict during re-install them.
- 2 Copy the F/W upgrade file into the root directory of USB or SD card after unzipping it. Connect USB memory or SD Card which containing F/W Upgrade file into this unit.



### 3 Select home interface between LauncherPro and TVroiLauncher

- 1) LauncherPro
  - MENU
  - Preferences
  - Restore Backup
- 2) TVroiLauncher
  - MENU
  - Restore Default